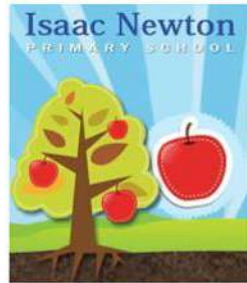




Raising standards and driving outstanding lifelong learning for over 700 pupils in 7 special needs schools and nearly 800 pupils across 4 mainstream primary schools.



Community Inclusive Trust is an education charity and not-for-profit sponsor of mainstream primary schools and special needs schools across the East Midlands.

Our schools enhance the education provision of the community they serve and improve the life chances of the pupils.



New Shepshed Free School

The need for a SEMH (Social, Emotional, and Mental Health) school in Leicestershire has been identified by Leicestershire County Council and the Department for Education.

- C.I.T Academies are applying to open the new SEMH Free School in Shepshed.
- The Free School will have a cohort of 50 pupils aged 7 to 16.
- This is an informal drop in session and we are available to discuss our Vision and Curriculum with you. We welcome your feedback on our proposal.

The consultation opened on 10th July, and will close on the 21st August 2019.



Proposed site:

Iveshead Campus
Forest Street
Shepshed



**Leicestershire
County Council**

C.I.T Values

We are currently a family of 11 schools, a Teaching School, and newly named sponsors of another mainstream Primary pending academisation in December.

All members of staff are accountable for the following values:

TRUST :

We underpin all relationships with trust.

RESPECT :

We celebrate all individuals, organisations and cultures.

OUTSTANDING PROVISION :

We develop excellence in learning that is at the heart of the community.

PERSONALISED LEARNING :

We will nurture and inspire everyone.

What does this look like in practice?

- Collaborative working
- Promoting and sharing excellence across our schools and services
- Trusting and respecting other's opinions and ways of working towards achieving our vision
- Embrace the differences in the way individuals and schools work and develop, serve their needs, to achieve outstanding outcomes.



C.I.T Vision

C.I.T drives **OUTSTANDING** lifelong Learning for all (pupils and staff)

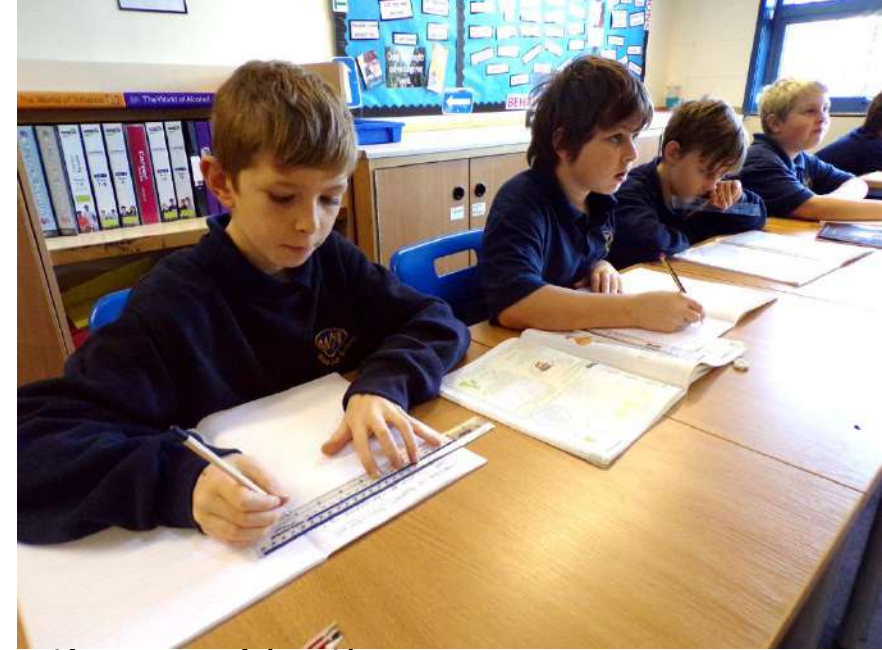
Achieving our vision will create a first class infrastructure that influences education, provides the most enriching educational environment for all of our community, and enables outstanding lifelong learning.

The new SEMH specialist school in Shepshed will operate on a hub and spoke model, working very closely with the five mainstream schools to the North of Leicestershire that have recently become SEMH resource bases. C.I.T will also work closely with the other primary and secondary schools in North Leicestershire when and where necessary to support pupils.

The Trust will also engage with FE establishments and the Special Needs Assessment Team for 16-19, to compliment the SEMH Careers offer to pupils.

C.I.T already manage two SEMH schools in Lincolnshire – Woodlands Academy in Spilsby, an Outstanding school, and Greenfields Academy, a Good school in Grantham.

At Shepshed the Trust will develop and implement an individualised and personalised curriculum to meet the needs of the 21st Century learner.



Curriculum

The curriculum at the new SEMH school will be broad and balanced and meet the requirements of the National Curriculum.

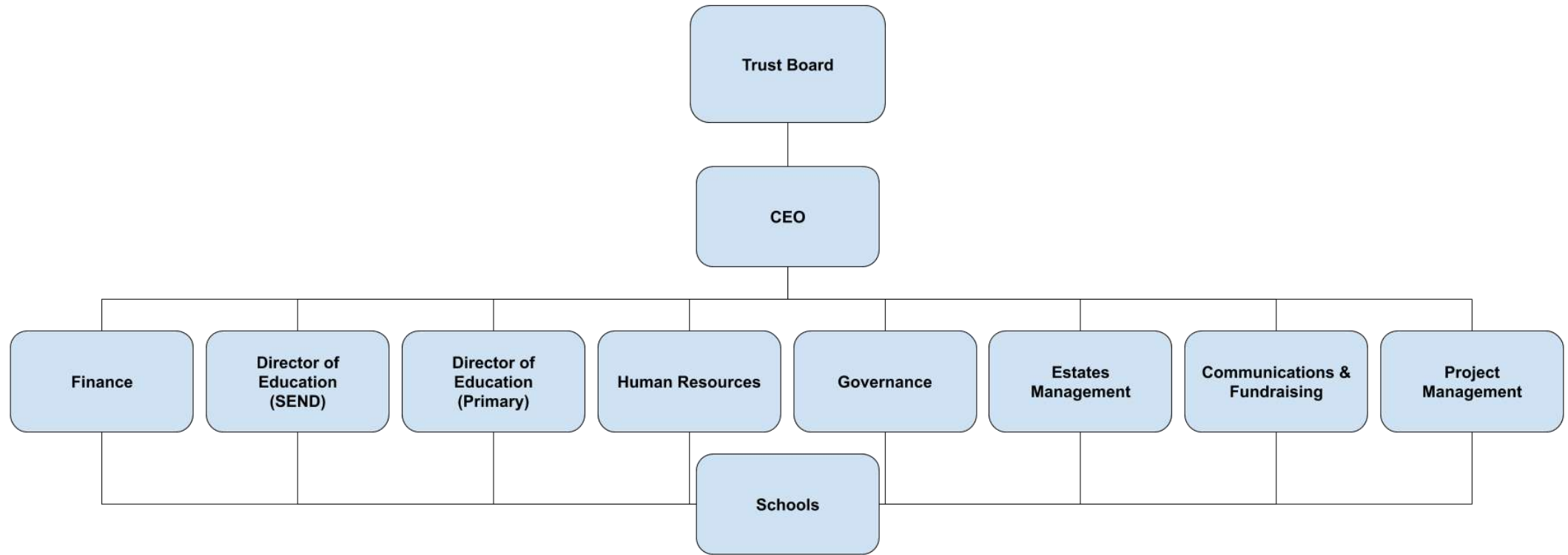
The curriculum will focus on purposeful learning. Purposeful learning leads to a clear outcome whereby children can identify the skills they have developed.

We will aim to:

- Engage children in interesting, hands-on topics and experiences
- Promote positive attitudes towards learning so children can explore and enjoy learning
- Make meaningful links between subjects
- Make learning relevant to their own lives so they can make connections to abstract themes and concepts
- Develop children's skills, knowledge and understanding of a range of themes, subjects and disciplines
- Promote acceptance of culture and heritage, including British Values
- Develop skills and strategies to work independently
- Develop the passion and perseverance towards achieving long-term goals
- Nurture children's passions and interests
- Prepare children for their future



Operational Structure



Support Hub

The Trust provides a Support Hub for the benefit of all C.I.T schools.

The Hub operates 52 weeks of the year and exists to ensure that staff working within schools are provided with the highest quality resources and services. These include:

- Trust Board/CEO
- Directors of Education
- Finance Team
- Accountancy/Auditing
- Financial monitoring and budget setting packages
- HR and Payroll
- Central Fundraising Team
- PR & Marketing
- Health and Safety
- Estates Management
- Insurance
- ICT
- Performance Management
- Health Checks
- Condition improvement Bids (Over £5m secured during 2017/18)



Why C.I.T?

We have a proven track record for supporting schools through to achieving outstanding outcomes through personalised and individualised approaches. We do not advocate a “one size fits all” mantra. This approach is underpinned by an ethos of high challenge, high support and achieving excellence through equity.

”

C.I.T challenged and supported Isaac Newton to improve standards. The new Headteacher had a powerful impact on the school bringing a clarity of vision that enabled rapid improvement across the school with a relentless focus on ensuring the best for each pupil.



Isaac Newton Primary School

”

The thing that always struck me was how The Priory treated my son as an individual. They never rushed him and always worked at his pace, taking the time to put into place the education that was needed to meet his level, to challenge him, and keep him focused. Nathaniel went on to receive 8s and 7s (the equivalent of A* and A), in his GCSE's!



The Priory School



C.I.T SEMH Case Study

On joining one of our SEMH schools, Pupil D struggled with behaviour and physical conflict when with his peer group. Behaviour would regularly escalate during lesson time within a classroom setting.

Pupil D was introduced to outdoor learning, taking lessons (Geography, Art, Science, DT, Maths, Music, Drama) outside within the Forest School.

Pupil D's physical conflict reports fell by two thirds within the first year. Pupil D began interacting positively with his peers. Now with careful management Pupil D's passion for learning has developed further allowing him to engage with staff, peers and visitors in a positive manner.

Pupil D now views new challenges with excitement, rather than frustration, and is on his way to gaining numerous qualifications and moving on to study Carpentry at College.

C.I.T currently manage an Outstanding Ofsted rated SEMH School and a Good Ofsted rated SEMH School.



School Performance

- Linchfield (MAINSTREAM PRIMARY)
- Chapel (MAINSTREAM PRIMARY)
- Poplar Farm (MAINSTREAM PRIMARY)
- C.I.T have been named by the DfE as preferred sponsors subject to due diligence
- Newly Sponsored Primary Academy 2018
- Brand New Primary School opened September 2018

OFSTED RESULTS:

- Woodlands (SEMH)
- Ambergate (SEND)
- Sandon (SEND)
- Garth (SEND)
- Priory (SEND)
- John Fielding (SEND)
- Caythorpe (MAINSTREAM PRIMARY)
- Isaac Newton (SPONSORED MAINSTREAM PRIMARY)
- Greenfields (SEMH)
- Outstanding
- Outstanding
- Outstanding
- Outstanding
- Good Improver
- Good
- Good
- Good
- Good



We care about our staff and their wellbeing

In partnership with our external partner Croner, the HR Team collaborate and communicate effectively with all schools across the Trust to provide ongoing support and advice as and when needed.

We offer a 24 hour helpline for ALL C.I.T employees, so they can discuss:

Family issues - medical information - lifestyle addictions - gambling - financial - relationships - domestic abuse - insurance claims - consumer issues - debt - legal - stress - childcare - housing

Some members of staff have already used the service, and this is what they had to say about it:

“They gave me legal advice and saved me money. I can’t believe it didn’t cost me anything.”

“It was a first class service to be fair, and helpfully relevant to my mental health.”

“They helped me with some financial issues and helped put me on the right track with my debt management.”



**This consultation begins on 10th July 2019
and ends on 21st August 2019.**

Please sign in and feel free to take an information leaflet.
This presentation is available to view on our website.

If you have any comments, please fill in a slip before you leave.
Please let us know if you are interested in becoming a school governor.

If you are a local education provider, we are keen to receive linking letters from you – please tell us how you would like to work together in the future to support the children in the area – please email linking letters to jacki.Bartram@citacademies.co.uk
Thank you.

SEMH Free School Application- Public Engagement Meeting - Comments / Question slip



Learn more about us

Visit our website www.citacademies.co.uk

- News from across the Trust
- Links to individual school websites
- Case Studies from across the Trust
- Health Checks
- Who's Who
- Governance and Leadership Structure
- Policies
- Teaching School

