



Proposed improvements to Sandon School



About Sandon...

- Grantham Additional Needs Fellowship (GANF) consists of two Grantham based special schools: Ambergate Sports College and Sandon School.
- Sandon School caters for pupils between the **ages of 3 and 19** with **Severe Learning Difficulties** and **complex needs**.
- Our pupils' needs are wide ranging; many are on the autistic spectrum, with others having ADHD and varying degrees of developmental delay, and some with **Profound and Multiple Learning Difficulties**.



What we would like to do...

Advance facilities at Sandon School, in order to improve standards for the care and wellbeing of pupils.

Sandon School first opened in 1970. We would like to make improvements in 2020 which include some internal remodelling, installation of a Hydro Pool, and a Hygiene Suite with tracking.

These improvements will allow us to cater for the complex needs of the children who attend here.



Why we need to do it...

Hydro Pool:

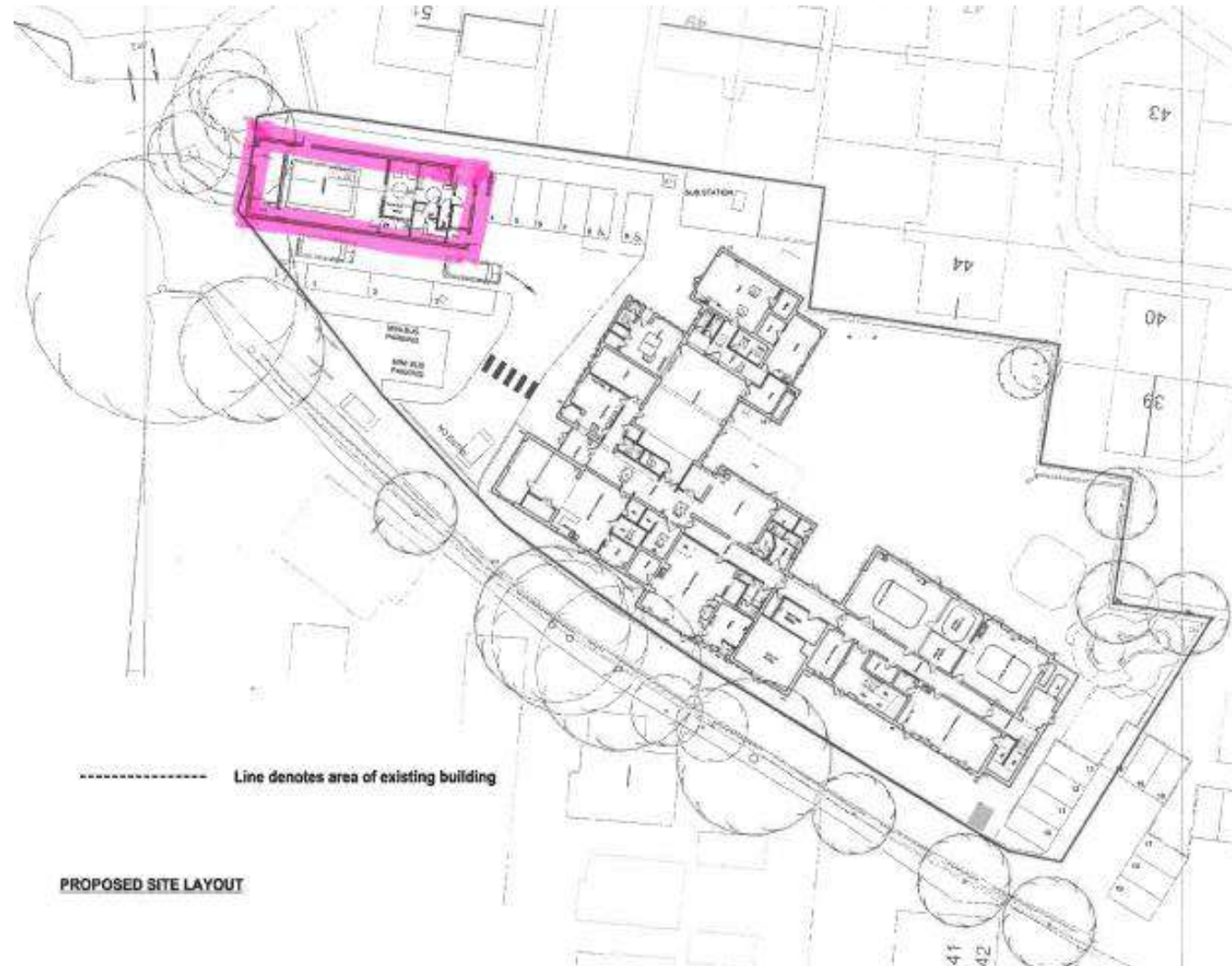
- Decreased disruption to pupils and time spent travelling to off site facilities
- Pain relief
- Increase in range of joint motion
- Muscle strengthening
- Improved circulation

Hygiene Suite with tracking:

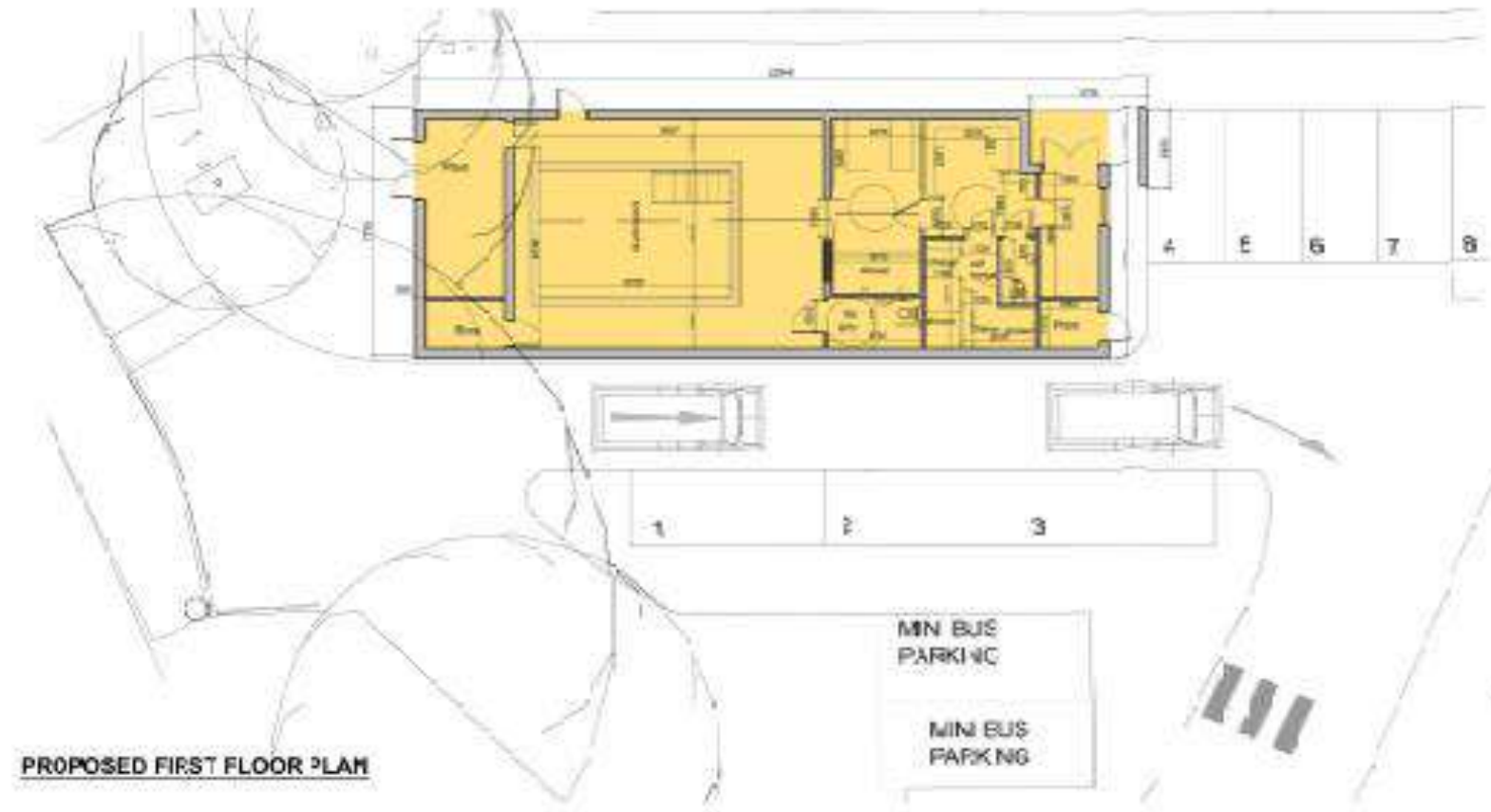
The current hygiene suite is on the first floor. We need a hygiene suite downstairs to allow for children with mobility issues to access ground floor facilities.



Proposed site plan:



Proposed floor plan:



External Artist Impressions:







Community Inclusive Trust, Poplar Farm School, Helmsley Road, Grantham, NG31 8XF

Telephone: 03300 585 520

www.citacademies.co.uk

enquiries@citacademies.co.uk