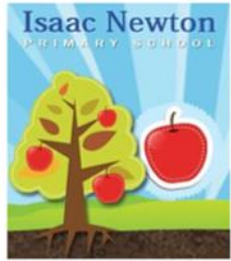




**Raising standards and driving outstanding lifelong learning for over 700 pupils in 7 special needs schools and nearly 1,000 pupils across 5 mainstream primary schools.**



Lincolnshire Education And Research Network



Community Inclusive Trust is an education charity and not-for-profit sponsor of mainstream primary schools and special needs schools across the East Midlands.

Our schools enhance the education provision of the community they serve and improve the life chances of the pupils.



# New Blaby Free School

**The need for a SEMH (Social, Emotional, and Mental Health) school in Leicestershire has been identified by Leicestershire County Council and the Department for Education.**

- C.I.T Academies has been approved as sponsor by the Secretary of State for Education.
- Foxfields Academy will be a 50-place school for primary and secondary aged pupils and is being developed on the former Oakfield School site in Blaby, Leicestershire.
- Admissions to the school will be for those pupils having an Education Health and Care Plan (EHCP) issued by the Local Authority.
- The proposed opening date for the new school is mid October 2020.
- This presentation outlines C.I.T's proposal for the new school and explains more about the Trust. We welcome your feedback.

**The consultation opened on 12<sup>th</sup> May, and will close on the 22<sup>nd</sup> June 2020.**

*During these unprecedented times, this consultation will take place online.*



# Proposed site:

Oakfield School  
Hospital Lane  
Blaby



**Leicestershire  
County Council**



# C.I.T Values

We are currently a family of 12 schools and a Teaching School.

All members of staff are accountable for the following values:

## **TRUST :**

We underpin all relationships with trust.

## **RESPECT :**

We celebrate all individuals, organisations and cultures.

## **OUTSTANDING PROVISION :**

We develop excellence in learning that is at the heart of the community.

## **PERSONALISED LEARNING :**

We will nurture and inspire everyone.

### **What does this look like in practice?**

- Collaborative working
- Promoting and sharing excellence across our schools and services
- Trusting and respecting other's opinions and ways of working towards achieving our vision
- Embracing the differences in the way individuals and schools work and develop, serve their needs, to achieve outstanding outcomes.



# C.I.T Vision

## C.I.T drives **OUTSTANDING** lifelong Learning for all (pupils and staff)



Achieving our vision will create a first class infrastructure that influences education, provides the most enriching educational environment for all of our community, and enables outstanding lifelong learning.

The new SEMH specialist school in Blaby will support and work closely with local mainstream schools where necessary to support pupils.

The Trust will also engage with FE establishments and the Special Needs Assessment Team for 16-19, to compliment the SEMH Careers offer to pupils.

*C.I.T already manage two SEMH schools in Lincolnshire – Woodlands Academy in Spilsby, an Outstanding school, and Greenfields Academy, a Good school in Grantham.*

At Blaby the Trust will develop and implement an individualised and personalised curriculum to meet the needs of the 21<sup>st</sup> Century learner.



# Curriculum

The curriculum at the new SEMH school will be broad and balanced and meet the requirements of the National Curriculum.

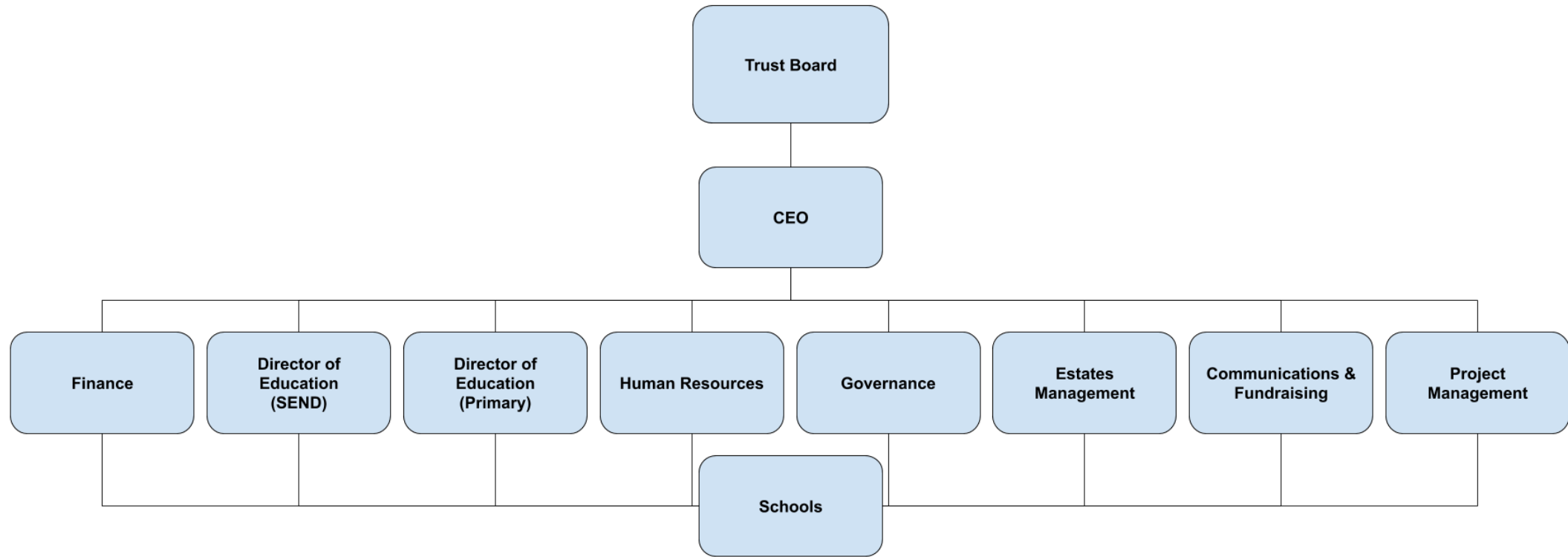
The curriculum will focus on purposeful learning. Purposeful learning leads to a clear outcome whereby children can identify the skills they have developed.

## We will aim to:

- Engage children in interesting, hands-on topics and experiences
- Promote positive attitudes towards learning so children can explore and enjoy learning
- Make meaningful links between subjects
- Make learning relevant to their own lives so they can make connections to abstract themes and concepts
- Develop children's skills, knowledge and understanding of a range of themes, subjects and disciplines
- Promote acceptance of culture and heritage, including British Values
- Develop skills and strategies to work independently
- Develop the passion and perseverance towards achieving long-term goals
- Nurture children's passions and interests
- Prepare children for their future



# Operational Structure





# Support Hub

The Trust provides a Support Hub for the benefit of all C.I.T schools.

The Hub operates 52 weeks of the year and exists to ensure that staff working within schools are provided with the highest quality resources and services. These include:

- Trust Board/CEO
- Directors of Education
- Safeguarding
- Finance Team
- Accountancy/Auditing
- Financial monitoring and budget setting packages
- HR and Payroll
- Central Fundraising Team
- PR & Marketing
- Health and Safety
- Estates Management
- ICT
- Performance Management
- Health Checks
- Condition improvement Bids (Over £5m secured during 2017/18)



# Why C.I.T?

We have a proven track record for supporting schools through to achieving outstanding outcomes through personalised and individualised approaches. We do not advocate a “one size fits all” mantra. This approach is underpinned by an ethos of high challenge, high support and achieving excellence through equity.

”

C.I.T challenged and supported Isaac Newton to improve standards. The new Headteacher had a powerful impact on the school bringing a clarity of vision that enabled rapid improvement across the school with a relentless focus on ensuring the best for each pupil.



**Isaac Newton Primary School**

”

The new Leadership Team took swift and effective action to bring about rapid improvements. Ofsted inspectors praised the new Head for identifying the need to develop pupils attitudes to learning and changing the way in which they use teaching assistants to support pupils.



**Caythorpe Primary School**



# C.I.T SEMH Case Study

On joining one of our SEMH schools, Pupil D struggled with behaviour and physical conflict when with his peer group. Behaviour would regularly escalate during lesson time within a classroom setting.

Pupil D was introduced to outdoor learning, taking lessons (Geography, Art, Science, DT, Maths, Music, Drama) outside within the Forest School.

Pupil D's physical conflict reports fell by two thirds within the first year. Pupil D began interacting positively with his peers. Now with careful management Pupil D's passion for learning has developed further allowing him to engage with staff, peers and visitors in a positive manner.

Pupil D now views new challenges with excitement, rather than frustration, and is on his way to gaining numerous qualifications and moving on to study Carpentry at College.



# School Performance

- St Pauls Community Primary School & Nursery
- Chapel
- Poplar Farm

- Newly sponsored Primary Academy in February 2020
- Sponsored Primary Academy 2018
- Brand New Primary School opened September 2018

## Ofsted Results:

- |                 |                    |
|-----------------|--------------------|
| • Priory        | - Outstanding 2020 |
| • Garth         | - Outstanding 2019 |
| • Woodlands     | - Outstanding 2019 |
| • Sandon        | - Outstanding 2017 |
| • Ambergate     | - Outstanding 2017 |
| • Greenfields   | - Good 2019        |
| • John Fielding | - Good 2019        |
| • Isaac Newton  | - Good 2018        |
| • Caythorpe     | - Good 2017        |





# We care about our staff and their wellbeing

In partnership with our external partner Croner, the HR Team collaborate and communicate effectively with all schools across the Trust to provide ongoing support and advice as and when needed.

**We offer a 24 hour helpline for ALL C.I.T employees, so they can discuss:**

**Family issues - medical information - lifestyle addictions - gambling - financial - relationships - domestic abuse - insurance claims - consumer issues - debt - legal - stress - childcare - housing**

**Some members of staff have already used the service, and this is what they had to say about it:**

***“They gave me legal advice and saved me money. I can’t believe it didn’t cost me anything.”***

***“It was a first class service to be fair, and helpfully relevant to my mental health.”***

***“They helped me with some financial issues and helped put me on the right track with my debt management.”***



This consultation began on Tuesday 12<sup>h</sup> May 2020 and will end on Monday 22<sup>nd</sup> June 2020.  
**During these unprecedented times, this consultation will take place online.**

## Should C.I.T enter into a funding agreement with the Secretary of State?

If you have any feedback, please email [jacki.bartram@citacademies.co.uk](mailto:jacki.bartram@citacademies.co.uk)  
**Please let us know if you are interested in becoming a school governor.**

If you are a local education provider, we are keen to work together in the future to support the children in the area – please email [jacki.bartram@citacademies.co.uk](mailto:jacki.bartram@citacademies.co.uk)



Thank you for your interest.



# Learn more about us

The C.I.T website [www.citacademies.co.uk](http://www.citacademies.co.uk) is full of information about the Trust and its family of schools:

- News from across the Trust
- Links to individual school websites
- Case Studies from across the Trust
- Health Checks
- Who's Who
- Governance and Leadership Structure
- Policies
- Teaching School

