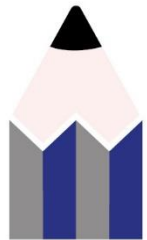




Consultation Presentation: 18th January 2024

- **HONESTY & INTEGRITY**
- **ASPIRATION**
- **PROFESSIONALISM**
- **INCLUSIVITY**



CIT CPD facilitated by
LEARN SEND HUB





STRATEGIC PLAN

2023 – 2026



OUR FOUNDATIONS

- Safeguarding
- Education
- People
- Finance
- Operations

OUR MISSION

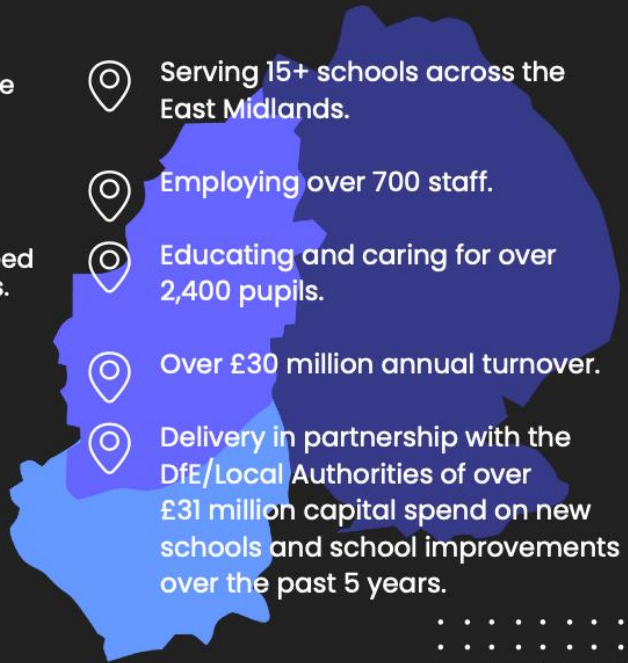
CIT will ensure that all pupils within its schools receive the best education and care, and the Trust works in partnership to support and improve the education system.

OUR VISION

CIT will support staff to give every pupil what they need to thrive and be ready for the next stage of their lives.

When we achieve our Vision this will provide:

- 01** Fully resourced high-quality education, care and safeguarding.
- 02** Best value for money through economies of scale.
- 03** Sustainability including carbon reduction initiatives to help the environment and reduce costs.



- Serving 15+ schools across the East Midlands.
- Employing over 700 staff.
- Educating and caring for over 2,400 pupils.
- Over £30 million annual turnover.
- Delivery in partnership with the DfE/Local Authorities of over £31 million capital spend on new schools and school improvements over the past 5 years.

OUR VALUES

- ▶ HONESTY & INTEGRITY
- ▶ ASPIRATION
- ▶ PROFESSIONALISM
- ▶ INCLUSIVITY

CIT has created a climate that drives high performance and celebrates success. We provide a positive approach when inevitable challenges arise, and through the shared use of talent and resources we support all to thrive across our family.

Our CIT Family

The Trust was formed in 2014, founded by two outstanding schools, Grantham Additional Needs Fellowship (GANF) – Ambergate Sports College and Sandon School.

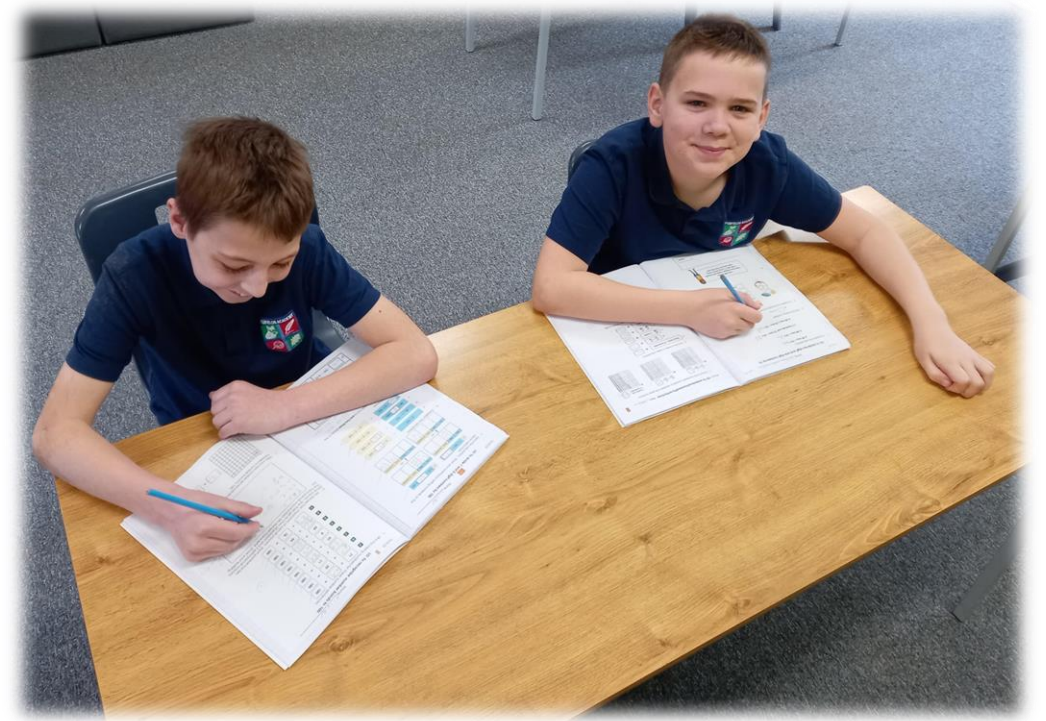
Our family of schools now consists of **7 mainstream primaries**, **7 special schools** (plus Bowman Academy opening in Leicestershire in 2024), and the **LEARN SEND Hub**.



New Free School for Shepshed

The need for a SEMH (Social, Emotional, and Mental Health) school in Leicestershire has been identified by Leicestershire County Council and the Department for Education.

- Bowman Academy will open to pupils in September 2024.
- The school will have a cohort of 64 pupils (by the end of Year 2) aged 5 to 16.
- All pupils will hold an Educational Health Care Plan (EHCP) for SEMH.
- All admissions will be via the Local Authority.
- The school is currently being built off Forest Street/Butthole Lane in Shepshed.





The build

Bowman Academy is currently under construction.

Curriculum

Bowman Academy will provide a tailored curriculum designed to prepare our pupils to be confident and successful individuals who make outstanding progress and are prepared for life after school.

We will aim to:

- Engage children in interesting, hands-on topics and experiences.
- Promote positive attitudes towards learning so children can explore and enjoy learning.
- Make meaningful links between subjects.
- Make learning relevant to their own lives so they can make connections to abstract themes and concepts.
- Develop children's skills, knowledge and understanding of a range of themes, subjects and disciplines.
- Promote acceptance of culture and heritage, including British Values.
- Develop skills and strategies to work independently.
- Develop the passion and perseverance towards achieving long-term goals.
- Nurture children's passions and interests.
- Prepare children for their future.



CIT SEMH Case Study

On joining one of our SEMH schools, Pupil D struggled with behaviour and physical conflict when with his peer group. Behaviour would regularly escalate during lesson time within a classroom setting.

Pupil D was introduced to outdoor learning, taking lessons (Geography, Art, Science, DT, Maths, Music, Drama) outside within the Forest School.

Pupil D's physical conflict reports fell by two thirds within the first year. Pupil D began interacting positively with his peers. Now with careful management Pupil D's passion for learning has developed further allowing him to engage with staff, peers and visitors in a positive manner.

Pupil D now views new challenges with excitement, rather than frustration, and is on his way to gaining numerous qualifications and moving on to study Carpentry at College.

CIT currently manage three Good Ofsted rated SEMH Schools across the East Midlands.



Should CIT enter into a funding agreement to run the new free school?

Please leave your feedback via our Consultation Form online [HERE](#).

**This consultation began on Thursday 14th December 2023
and ends on Thursday 25th January 2024.**

- Are you interested in becoming a School Governor, please get in touch.
- If you are a local education provider, we are keen to work together to support the children in the area, please get in touch.

Email: jacki.bartram@citacademies.co.uk

Thank you.



Any questions?



A Multi Academy Trust for:

GANF - Ambergate Sports College | GANF - Sandon School | Isaac Newton Primary School | Tulip Academy Spalding | Boston Endeavour Academy | Woodlands Academy | Poplar Farm Primary School | Caythorpe Primary School | Chapel St Leonard's Primary School | Greenfields Academy | St Paul's Community Primary School & Nursery | Foxfields Academy | Linchfield Community Primary School | Bingham Primary School | Bowman Academy | LEARN SEND Hub

Community Inclusive Trust Warwick House, Long Bennington Business Park, NG23 5JR
Tel 03300 585520 **Email** enquiries@citacademies.co.uk **Web** www.citacademies.co.uk

CIT Academies is an exempt charity and a company limited by guarantee registered in England with the name Community Inclusive Trust. The company's registered number is 9071623

